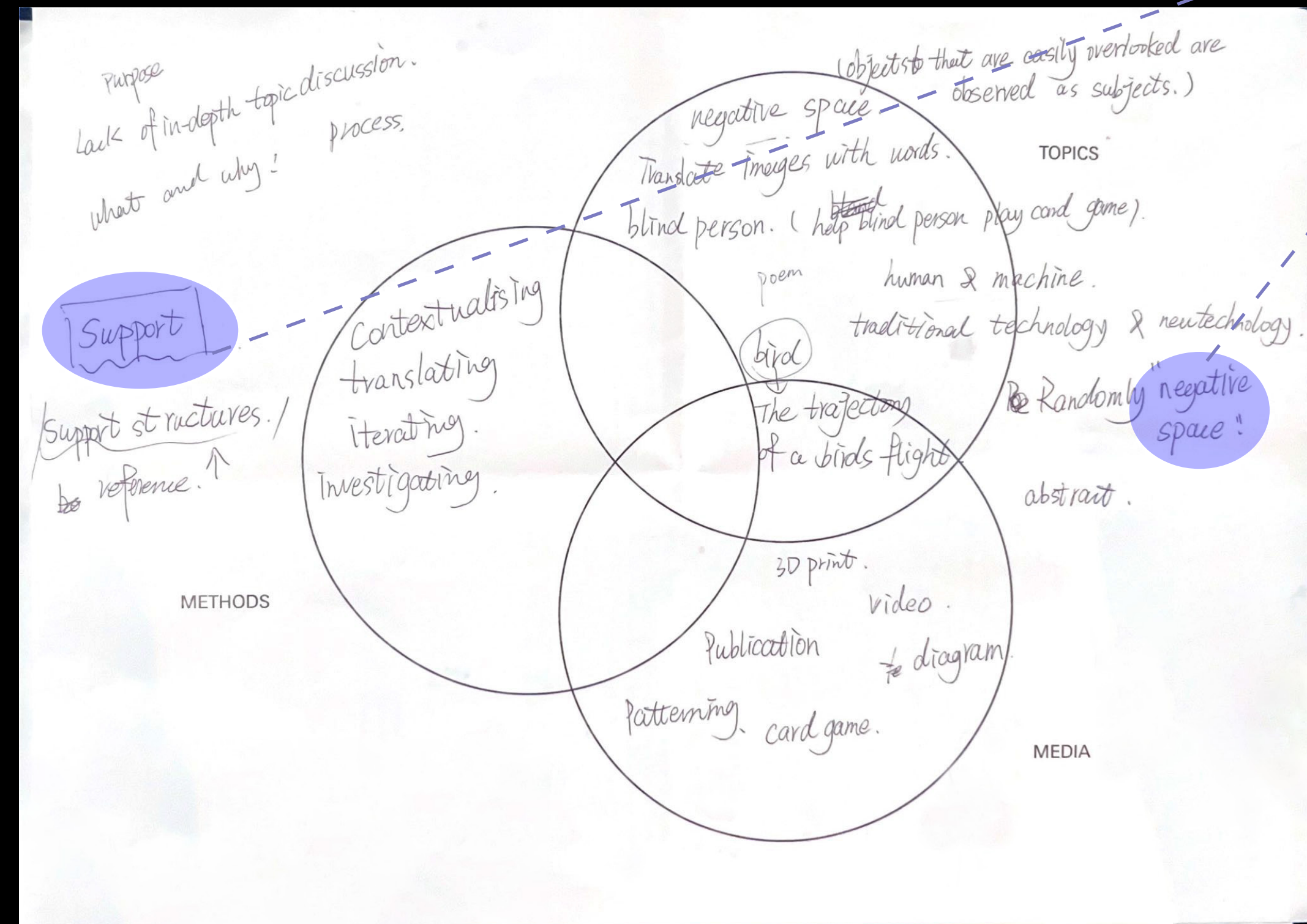




UNIT 2

POSITIONS THROUGH ITERATING

KEYWORDS



Support & Negative space & Symbolization

In my last project, I focused on the “negative space” formed by the support structure after the work is completed.

That led me to ask:

How do we use constructed systems to control space, information, and meaning?

I was also inspired by the book *Support Structures*, which talks about support not just as a physical thing, but as a metaphor for social, emotional, and political relationships.

But through my own reflection, **I began to see support as more of a symbol—a quiet but powerful way of communicating something.**

That made me wonder: What other everyday objects act like “supports,” both functional and symbolic?

— **zipper.**

Something we don’t think twice about—but actually, it’s a kind of **structural interface or a symbolic object.**

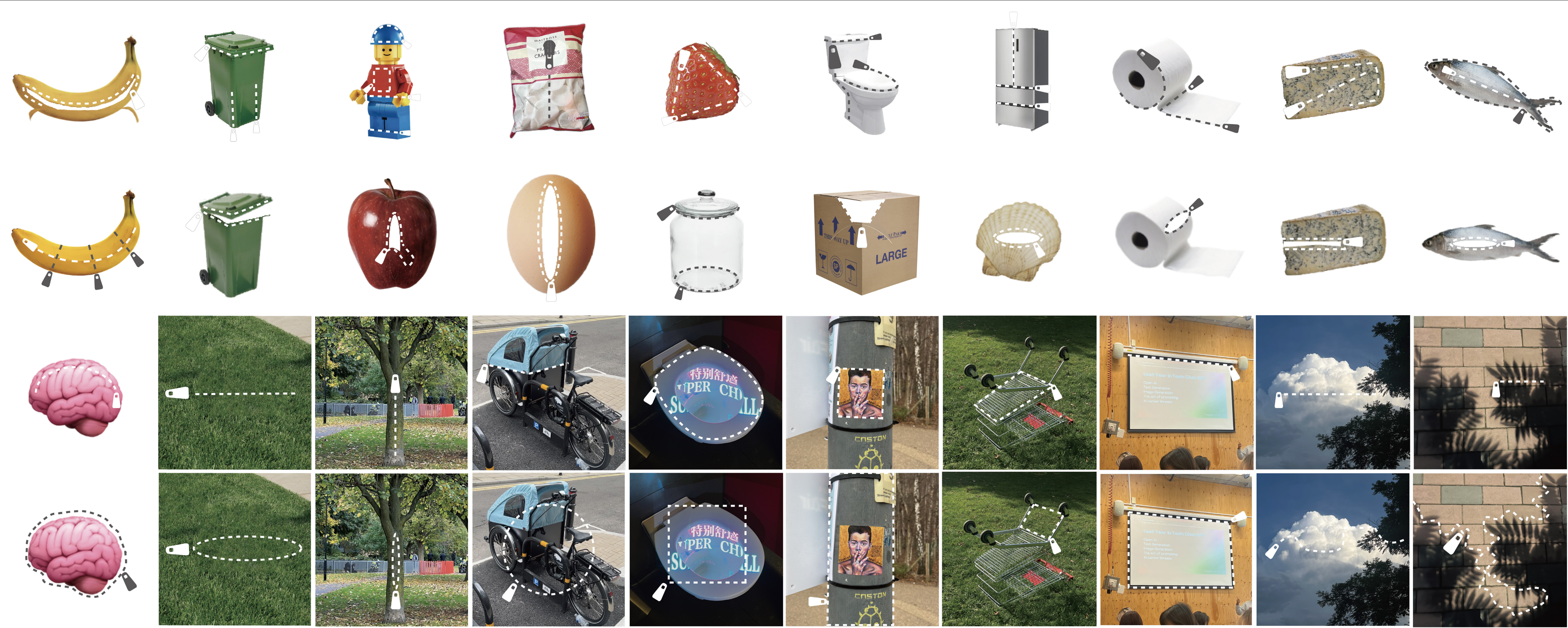
Just seeing a zipper makes people automatically think: “Can I open it? What’s behind it?”

GROUP 1

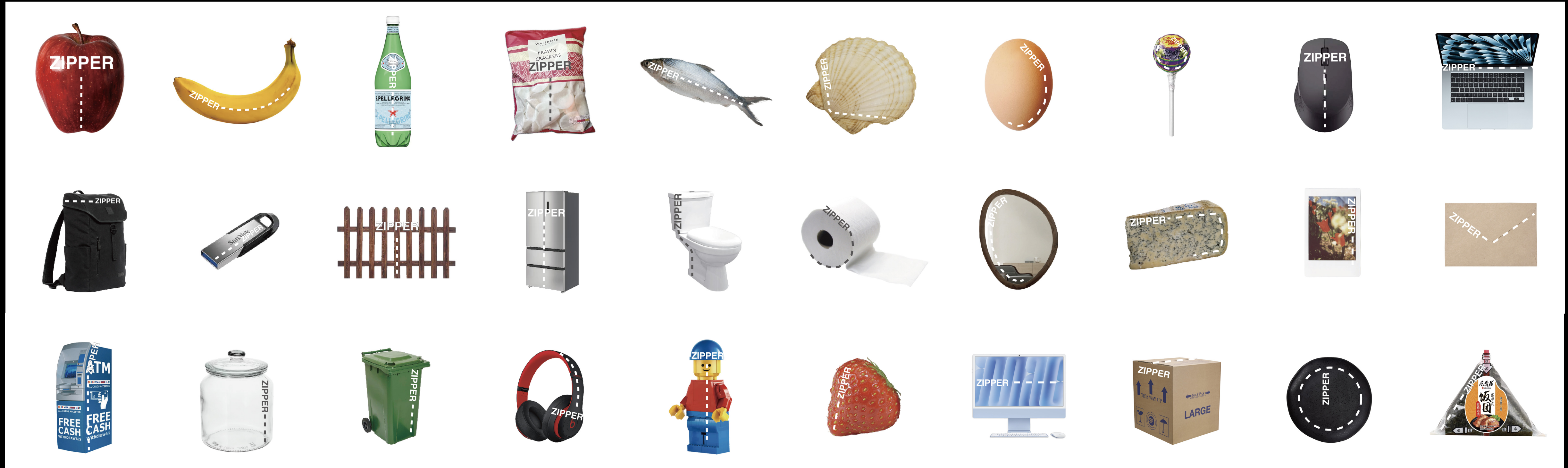


So I put zippers on different objects to create logical contradictions as well as visual contradictions.

GROUP 2



GROUP 3



I translated the zipper into text—I wanted to see if, without the visual symbol of a zipper, people would still want to open it.